

OXFORD COLLECTION

The Oxford Collection of click lock laminate flooring features tried and true coplions with the look and texture of real hardwood plank flooring.



PRINCETON/ GIT 1100

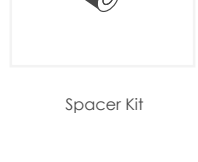


HARVARD/ GIT 1101

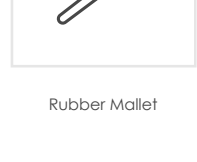
INSTALLATION MANUAL



Miter saw with sharp blade



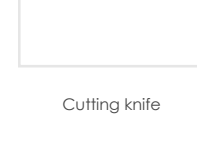
Spacer Kit



Rubber Mallet



Table saw with sharp blade



Cutting knife



Tape Measure and Pencil



Jig Saw



Tapping Block



Pull Bar



Sliding T Bevel



Combination Square

INSTALLER

It is the responsible of the installer to do the Final inspection of all the product before beginning the installation. The laminate should be inspected of color, finish, sheen, and shipping damages. Should any defects be present contact your dealer immediately. Once the laminate has been installed it is considered accepted.

ACCLIMATION

GIT laminate is required to acclimate prior to installation. To acclimate store boxes, flat and level in the area to be covered.

SUBFLOORS

GIT laminate cannot be installed over existing flooring or carpet. Ensure that the sub flooring is clean, dry, level and structurally sound. Variations in floor should not exceed +/- 2mm in 2m. GIT laminate flooring requires an underlay. It is underlay is required to insulate and act as a moisture barrier. Follow instruction on the underlay.

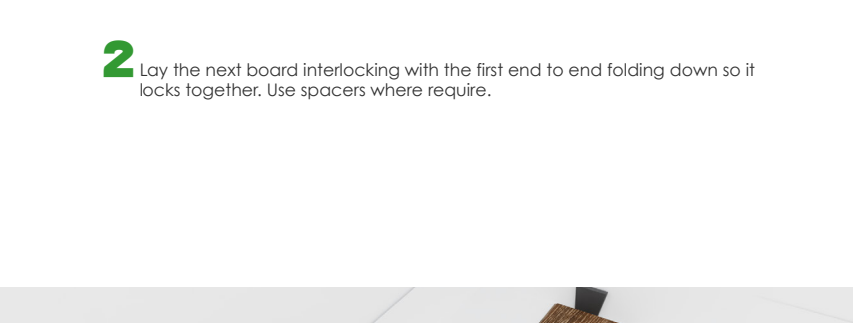
PREPARATION

Decide the direction of the GIT laminate planks. A recommendation would be to install parallel to the longest wall. Use a suitable compound to fill fix sub floor cracks. Never glue GIT laminate planks. Remove threshold baseboards and existing flooring if required.

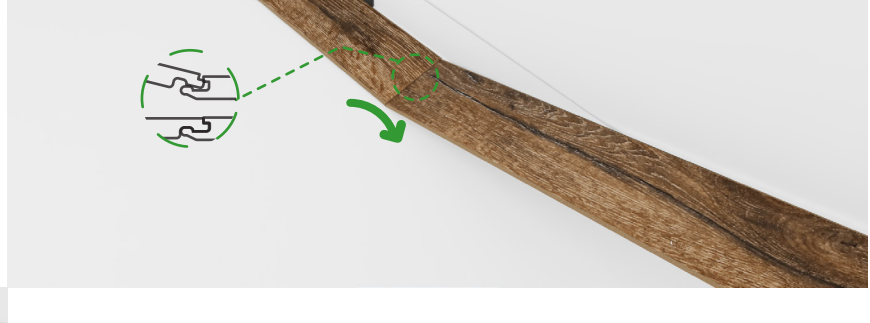
THE INSTALLATION



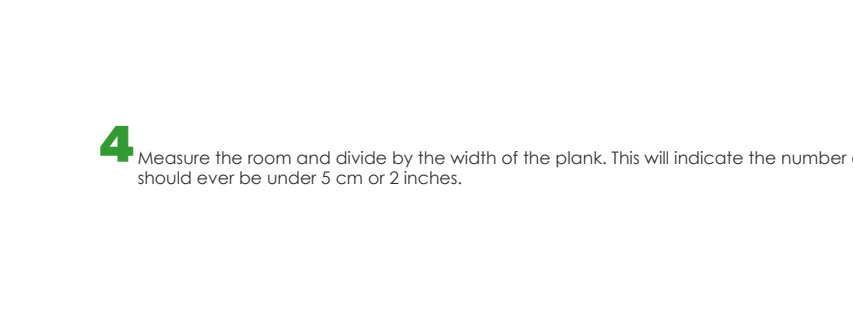
1 Place laminate plank so that the tongue is facing the wall 6mm or 1/4 inch from the wall. Use spacers between the wall and the plank.



2 Lay the next board interlocking with the first end to end folding down so it locks together. Use spacers where require.



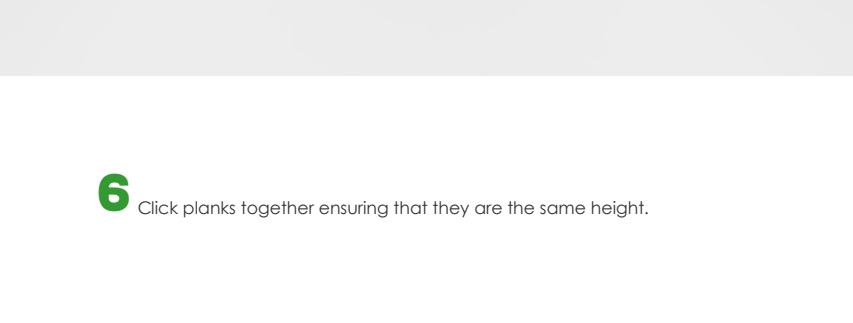
3 The last board in the row should be 6mm 1/4 inch from the wall to allow for expansion and at least 16cm or 7 inches in length.



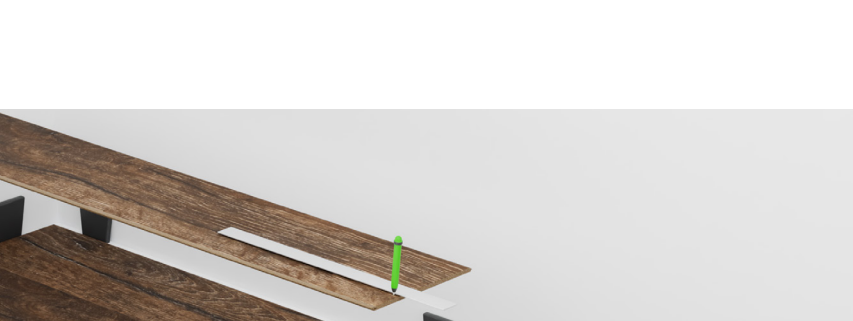
4 Measure the room and divide by the width of the plank. This will indicate the number of full width planks. It may be required to cut the last row of planks to fit. The last row should ever be under 5 cm or 2 inches.



5 Use the end of the first row to start the second row provided it 30cm or 12 inches. If not cut a new plank to start the row ensuring that joints are 18cm or 7 inches.



6 Click planks together ensuring that they are the same height.



7 After the first three rows are installed use a chalk line to check that the rows are straight.



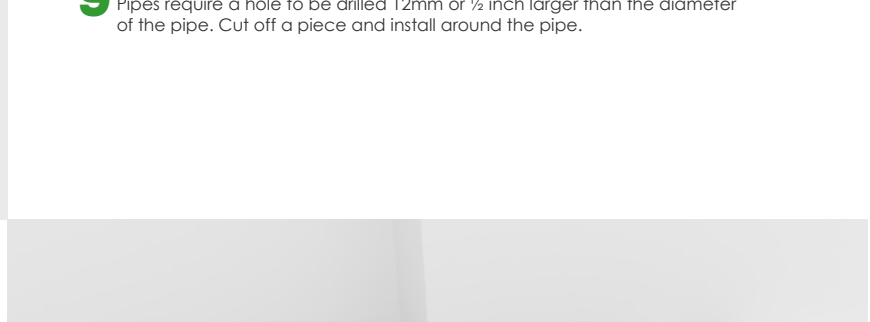
8 On the final row lay a plank upside down with the tongue touching the wall. Trace along the edge of the plank cut along this line the width of the plank. Insert the final piece against the wall.



9 Pipes require a hole to be drilled 12mm or 1/2 inch larger than the diameter of the pipe. Cut off a piece and install around the pipe.



10 When the laminate plank flooring is complete replace moldings to the wall leaving a small gap between molding and floor. Where the laminate meets other flooring use GIT T molding to cover exposed edges.



MAINTENANCE

- Clean all spills as soon as they happen.
- Clean with a laminated Floor cleaner. Apply cleaner to a clean pad never directly on the Floor.
- Use felt protectors under furniture and other product that are moved across the floor on a regular basis. Office chairs require chair mats.
- Remove spills right of way with a dry cloth or sponge.
- Do not use abrasive cleaners such as steel wool, wax, polish or detergents on you flooring.
- Door mats outside the entrance are beneficial in collection sand/gravel and other damaging substance from coming into contact with you laminate flooring.
- Color fast non scratchrig are rugs or runners are recommend.

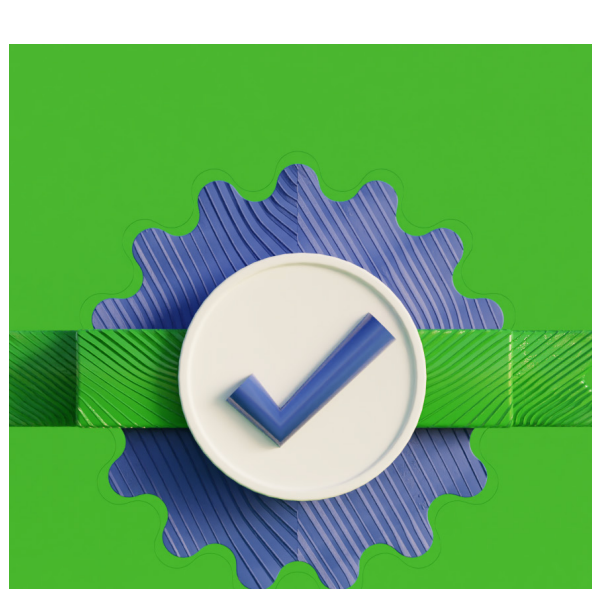
WARRANTY

- In the case of a residential application, for a period of 20 years from the date of purchase of the Goods
- In the case of light commercial application, for a period of 5 years from the date of purchase of the Goods

PRODUCT WARRANTY LIMITATIONS:

■ The Product Warranty does not apply to any Good that:

- has been subjected to abuse, misuse, neglect, negligence, accident, improper testing, improper installation, improper storage, improper handling, abnormal physical stress, abnormal environmental conditions or maintenance or use contrary to any instructions issued by us;



■ for the purpose of section 7(a), abuse includes surface damage resulting from tools or cleaning products;

- has been installed contrary to local building codes;
- has been painted or otherwise coated;
- has been reconstructed, repaired or altered by persons other than us or our authorized representative;
- or
- has been used with any third-party products, hardware or product that has not been previously approved in writing by us.

■ Referred to GIT Terms and conditions for the sales good.

CONTACT



website
info@installmasters.ca
installmasters.ca

EMAIL
info@installmasters.ca

location
Unit 2, 290 Industrial Drive,
Saint John, NB E2R 1A5

phone
(506) 898-1879
1 877 371 8808 Ext: 101

(506) 261-7152
1 877 371 8808 Ext: 102

FOLLOW US



Instagram Facebook LinkedIn