

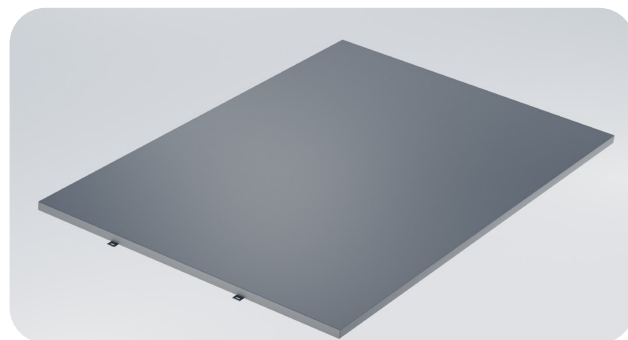


# ALUMINUM BUMP OUTS

INSTALLATION OVERVIEW

## ALUMINUM BUMP OUTS

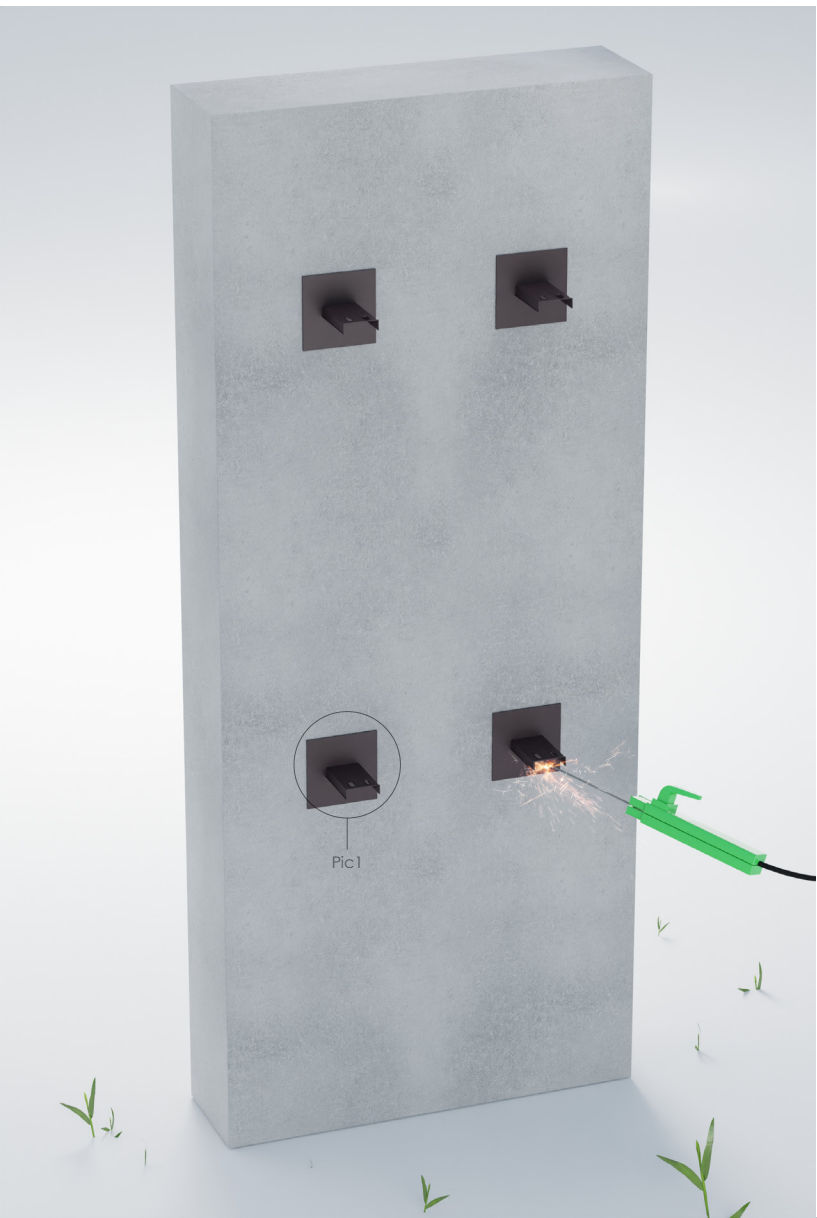
Welcome to the InstallMasters Aluminum Bump Outs Installation Manual. This guide provides essential instructions for a successful installation of Aluminum Bump Outs products. Following these guidelines will ensure a durable and aesthetically pleasing result. This manual is designed for professional contractors and offers step-by-step procedures to achieve the best outcome. Please read through this manual before starting your project and refer to it as needed.



IM21

## INSTALLATION OVERVIEW

### ALUMINUM BUMP OUTS



#### 1 Installing the Aluminum Base Plate.

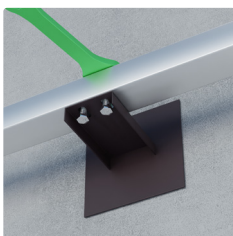
- ★ Position and Install the Aluminum Plate, and Secure the Aluminum plate to the wall, and ensure it is level and properly aligned.
- ★ Welding the Shelf Rail: Weld the shelf rail to the installed Aluminum plate. This shelf rail will act as a support shelf for the horizontal rails.



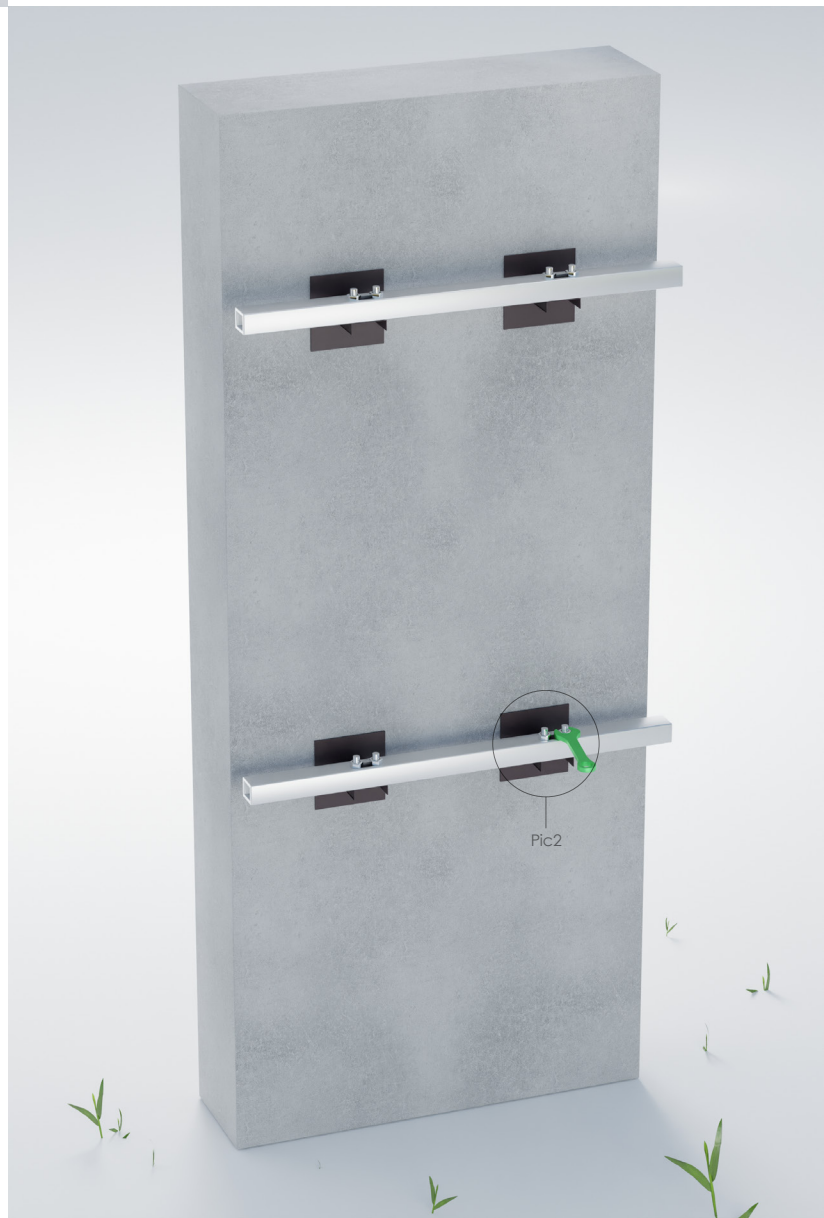
Pic1

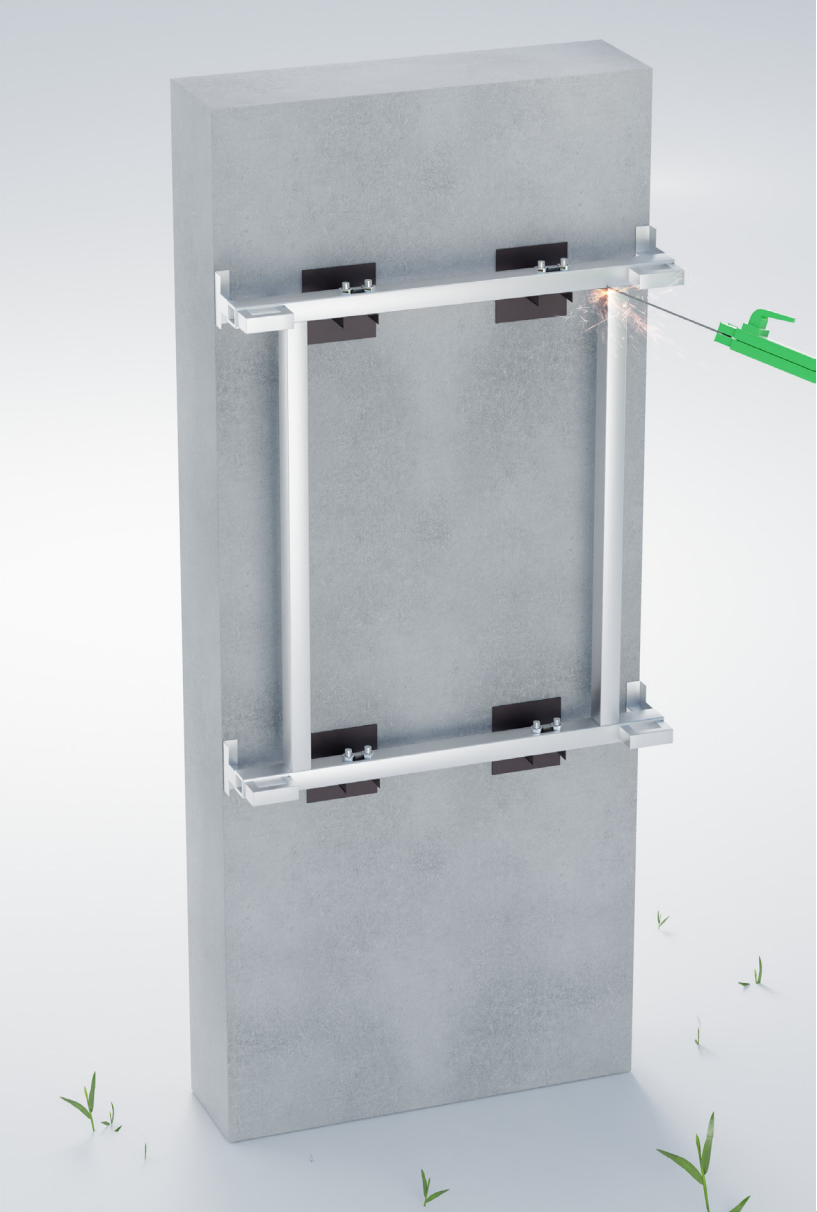
#### 2 Mounting Horizontal Aluminum rail.

- ★ Positioning: Place the horizontal Aluminum rails on the shelf rails.
- Securing with Screws: Connect the horizontal rails to the shelf rails using screws. Ensure the they are securely fastened.



Pic2



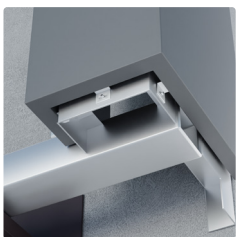


### 3 Installing Vertical Aluminum rails.

- ★ Weld the vertical Aluminum rails to the previously installed horizontal rails to create a strong sub frame. **Mounting Accessories:** Attach the mounting accessories to the horizontal rails. These accessories will hold the bump-outs in place.

### 4 Installing the Bump-Outs.

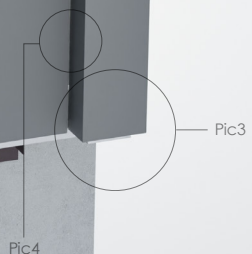
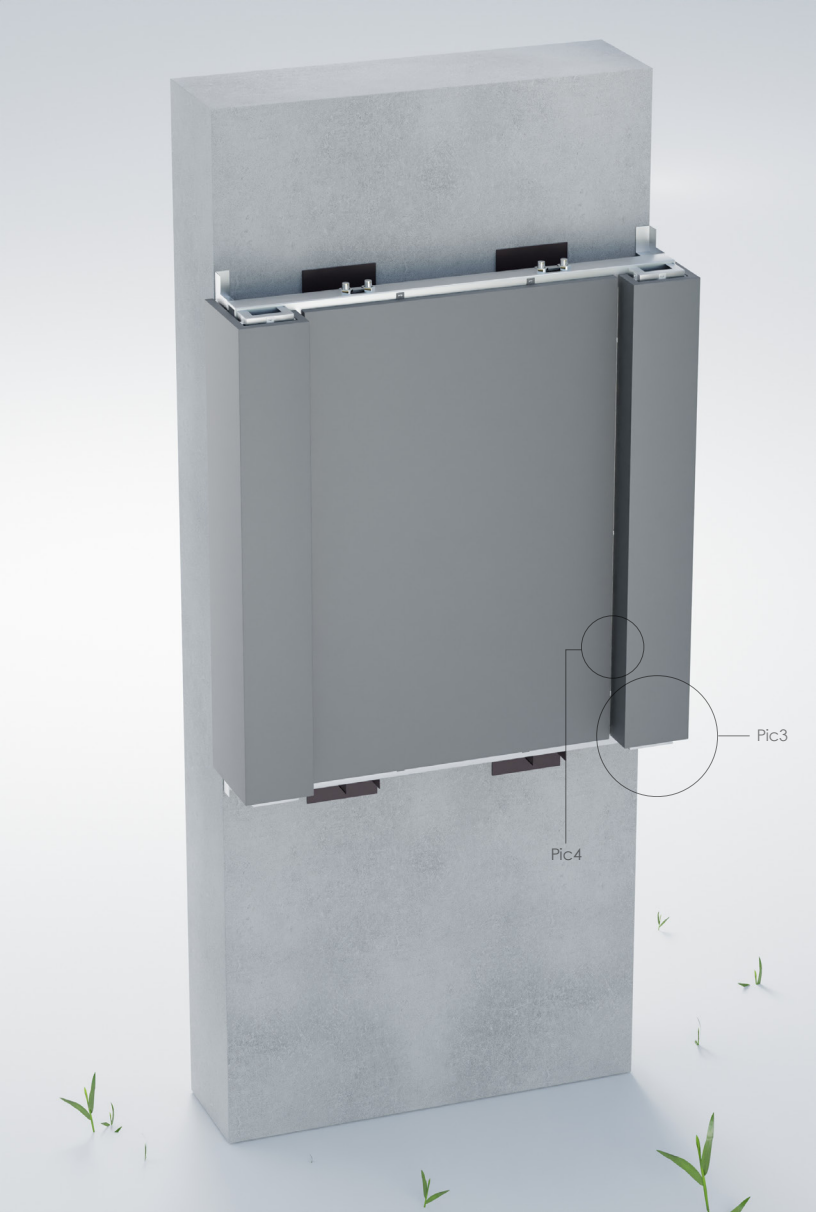
- ★ **Positioning the Bump-Outs:** Place the Aluminium bump-outs onto the mounting accessories.
- ★ **Positioning the Bump-Outs:** Place the Aluminium bump-outs onto the mounting accessories. **Securing with Screws:** Use the designated brackets on the bump-outs to screw them into the mounting accessories. Ensure each bump-out is securely fastened.
- ★ **Controlling Panel Seam Width and Verticality:** During installation, use shims or blocks to control and maintain the seam width and verticality between panels. Install and inspect each panel to ensure proper alignment and fit.



Pic3



Pic4





## 5 Sealing and Final Inspection.

- ★ Sealing the Panels: Apply proper sealant between the panels. Avoid sealing when the temperature is below 5°C. Do not perform sealing in windy or rainy conditions to prevent water ingress.
- ★ Final Inspection: Conduct a thorough inspection to ensure the installation meets all specified requirements. Check that all installed panels are plumb, level, and vertical, and verify the seam widths.



### website



installmasters.ca

### EMAIL

info@installmasters.ca

### location

Unit 2, 290 Industrial Drive,  
Saint John, NB E2R 1A5

### phone

(506) 898-1879  
877 3718808 Ext: 101



(506) 261-7152  
877 3718808 Ext: 102



### FOLLOW US



Instagram



Facebook



LinkedIn