



MODULAR  
**PORCH**  
TILE SYSTEM



SPECIFICATION

2025



# PRODUCT SPECIFICATION SHEET

COMPOSITE DECK TILE SYSTEM

## SYSTEM TYPES

### EASY CLICK SYSTEM

- ◆ **Base:** Reinforced polypropylene click-lock frame
- ◆ **Surface:** Composite wood-look panels
- ◆ **Installation:** Click-to-lock, floating system

### CLASSIC GRID SYSTEM

- ◆ **Base:** Polypropylene grid
- ◆ **Surface:** Composite slat top
- ◆ **Installation:** Loose lay, interlocking edges

### DIMENSIONS

- ◆ **Tile Size:** 30 cm x 30 cm
- ◆ **Tile Height:** ~25 mm
- ◆ **Weight:** Approx. 1 kg per tile
- ◆ **Surface Finish:** Anti-slip wood-textured finish

### MAINTENANCE

- ◆ Regular sweeping to remove debris
- ◆ Occasional rinse with clean water
- ◆ Avoid abrasive cleaners or high-pressure washers

### APPLICATIONS

- ◆ Balconies
- ◆ Porches
- ◆ Rooftop patios
- ◆ Temporary outdoor spaces

### MATERIAL COMPOSITION

- ◆ **Top Surface:** Wood-plastic composite (WPC)
- ◆ **Base Frame:** UV-resistant polypropylene
- ◆ **Color Options:** Multiple options available (refer to catalog)

### ADDITIONAL NOTES

- ◆ Drainage slope is the responsibility of the project site.
- ◆ Standing water due to improper slope may void performance expectations.
- ◆ Not suitable for vehicular or heavy industrial use.

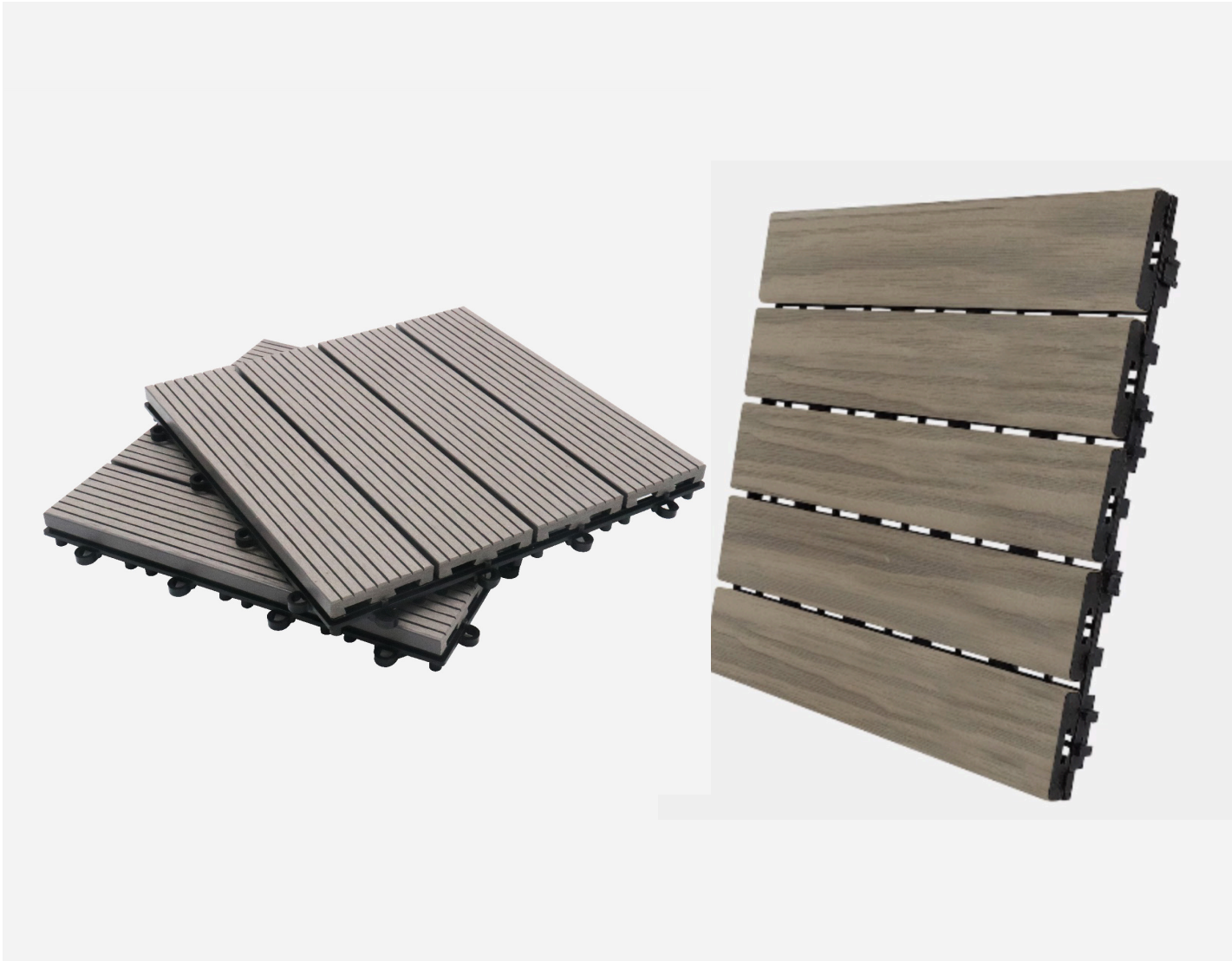
### INSTALLATION REQUIREMENTS

- ◆ **Substrate:** Smooth, flat concrete or similar solid surface
- ◆ **Slope Requirement:** Minimum 2% (5 mm per 25 cm) for water drainage
- ◆ **Sleeper System:** Not required
- ◆ **Attachment:** Free-floating; no adhesives or mechanical fastening needed
- ◆ **Finishing:** Optional edge ramps and corner trims available



# CERTIFICATIONS & PERFORMANCE

COMPOSITE DECK TILE SYSTEM



## FIRE RESISTANCE

- ◆ Classified Bfl-s1 (EN 13501-1)
- ◆ Critical flux (transverse): 10.3 kW/m<sup>2</sup>  
Smoke production: 35%·min

## UV RESISTANCE

- ◆ SGS tested to 4000 hours Xenon-Arc
- ◆ Result: Slight chalking, no cracks

## ENVIRONMENTAL DECLARATION

- ◆ EPD verified (EN 15804+A2 / ISO 14025 / ISO 21930)
- ◆ 90% recyclable
- ◆ 0.6 kWh electricity per kg used during manufacturing

## SUSTAINABILITY

- ◆ FSC Certified Wood
- ◆ Certificate: SA-COC-004795 (valid through August 2025)



**COLOR PALLET**  
COMPOSITE DECK TILE SYSTEM



SILVER GREY



TEAK



ANTIQUE



LIGHT GREY



WALNUT



MAPLE





**COLOR PALLET**  
COMPOSITE DECK TILE SYSTEM



**CEDAR**



**CHARCOAL**





#### EMAIL

info@installmasters.ca

#### LOCATION

Unit 2, 290 Industrial Drive,  
Saint John, NB E2R 1A5

#### PHONE

(506)898-1879

1 877 3718808 Ext: 101

(506)261-7152

1 877 3718808 Ext: 102

FOLLOW US



Website



instagram



facebook



LinkedIn